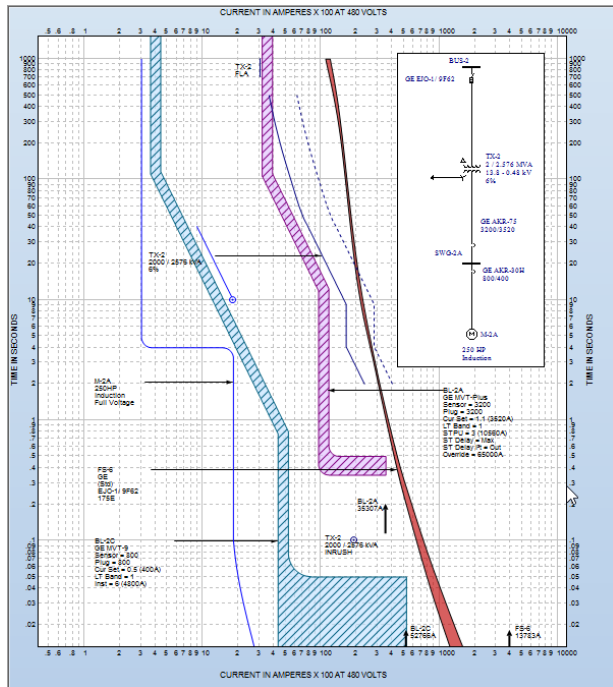
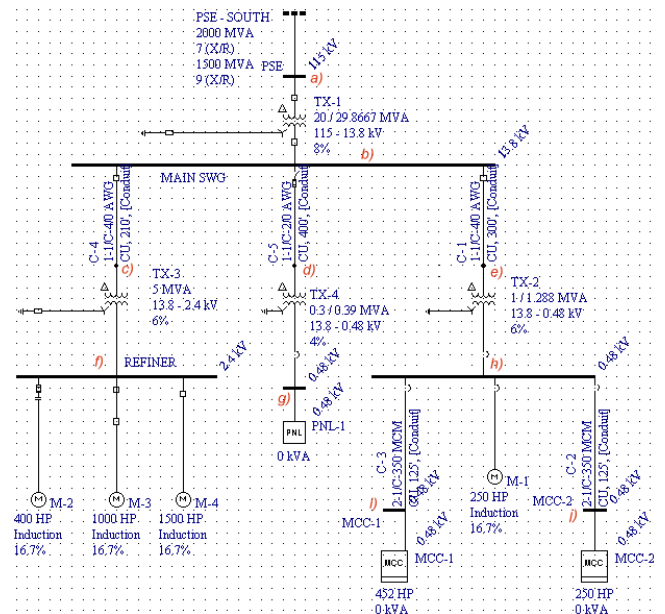


Summary

- One-line diagram
- Results and recommendations

Short-circuit analysis

- Utility data
- Short-circuit data/results
- Equipment evaluation



Protective device coordination study

- Coordination data/results
- Time-current curves
- Recommended protective device settings

Arc flash incident energy analysis

- Incident energy analysis results
- Incident energy analysis recommendations
- Arc flash label data

WARNING

**Arc Flash and Shock Hazard
Appropriate PPE Required**

| | |
|---------|--|
| 2' - 3" | Flash Hazard Boundary cal/cm ² Flash Hazard at 26 Inches FR shirt & FR pants or FR coverall |
| 13.8 | kV Shock Hazard when cover is removed |
| 5' - 0" | Limited Approach |
| 2' - 2" | Restricted Approach - Class 2 Voltage Gloves |
| 0' - 7" | Prohibited Approach - Class 2 Voltage Gloves |

Equipment Name: BUS-3 (Fed by: R-6)